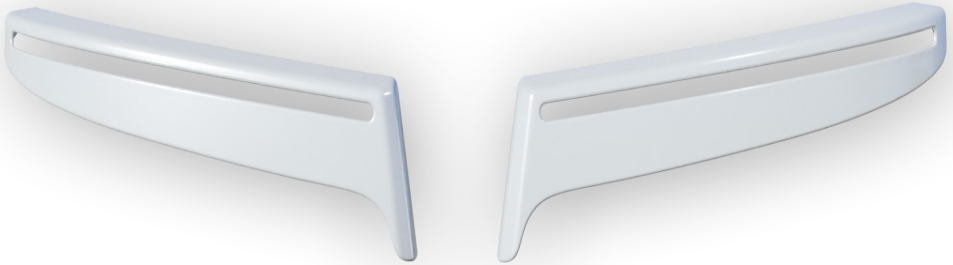


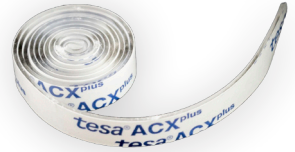
Styling parts that make your truck look great!

Mounting instructions for Eyelids



Contents

- 2 eyelids, left and right
- 1 roll of double sided adhesive tape (60cm long)



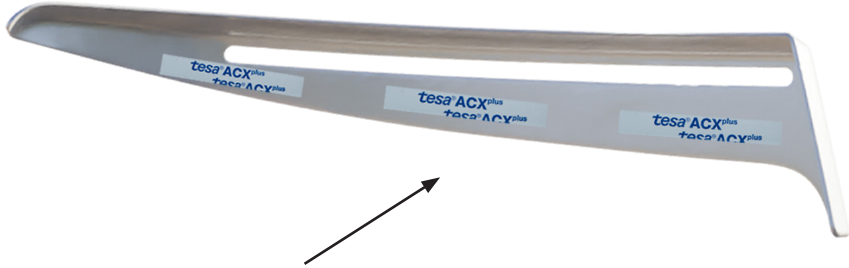
How-to

- Make sure that the surfaces on the eyelids and your truck lights are clean and dry.
- Cut the adhesive tape into six equal parts, 10cm long

continue on the other side

Styling parts that make your truck look great!

Backside view



- Apply as illustrated on each lid respectively
- Remove the protective film on the adhesive tape
- Put the eyelid in place and press firmly for 30 seconds

An ultimate bond is achieved after 72 hours.
After 3 hours it has 75% of it's strenght



art nr: 354